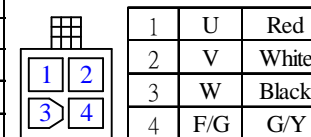
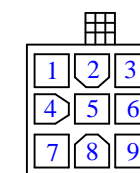


Model:JSMA-PBC02AWK									
No.	Item	Symbol	Unit	Specification	No.	Item	Symbol	Unit	Specification
1	Drive	-	-	3 $\varphi$ 220VAC	13	Rotor Inertia	J-M	kg-cm <sup>2</sup>	0.42±10%
2	Cooling Method	-	-	Totally Enclosed	14	Rated Power Rate	Q-R	Kw/s	9.75
3	Exciting Method	-	-	Permanent Magnet	15	Resistance	Ra	$\Omega$	6.4±10%/2 $\varphi$
4	Resolution	-	-	23 bit-ABS	16	Inductance	L	mH	16.2±10% / 2 $\varphi$
5	Rated Output	P-R	W	200	17	Mech. Time Constant	Tm	ms	1.89±10%
6	Rated Torque	T-R	N-m	0.64	18	Elect. Time Constant	Te	ms	2.53±10%
7	Max. Torque	T-max	N-m	1.91	19	Insulation Class	-	-	Class F
8	Rated Speed	N-R	rpm	3000	20	Operation Temp.	T	°C	0~40
9	Rated Current	I-R	A	1.6	21	Operation Humd.	RH	%	<80
10	Max. Current	I-max	A	4.8	22	Storage Temp.	T	°C	-20°~60°
11	Torque Constant	Kt	N-m/A	0.46	23	Storage Humd.	RH	%	<80
12	Voltage constant	Ke	V/Krpm	28±10%	24	Weight	W	kgw	1.1

NO	Signal	Color
1	Vcc	red
2	GND	black
3	VB+	brown
4	VB-	brown/black
5	SD+	blue
6	SD-	blue/black
7		
8		
9	FG	SHIELD



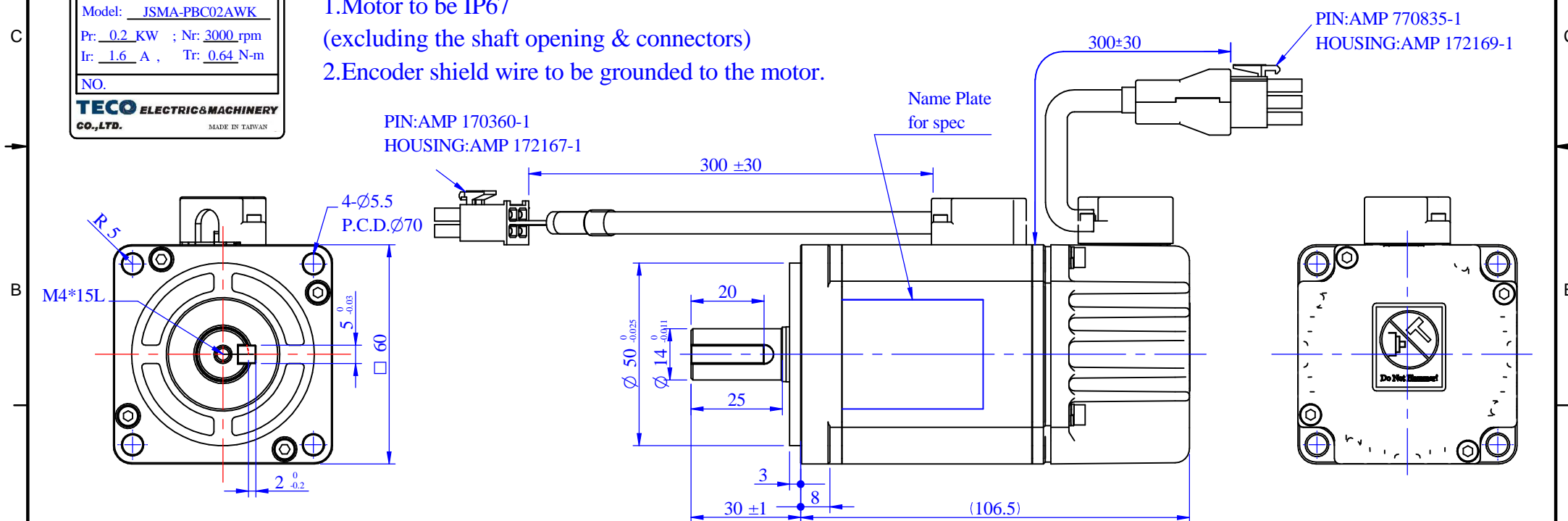
## Motor Wiring


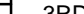


## Encoder Wiring

Notes:

1. Motor to be IP67  
(excluding the shaft opening & connectors)
2. Encoder shield wire to be grounded to the motor.



STANDARD TOLERANCE						APVD			SCALE	2/3	UNIT	m m	NAME	SERVO MOTOR OUTLINE DRAWING		
X	±0.5					CHKD			3RD .A.P			TITLE	JSMA-PBC02AWK			
.X	±0.2					CHKD										
.XX	±0.05					CHKD										
ANGLE	±30'					DWN	Leon	03-11-16	 <b>TECO ELECTRO DEVICES CO., LTD.</b>			Dept.	DWG.NO.	D01E06201C3NR3D01		
MATERIAL		REV	DESCRIPTION	SIGNATURE	DATE		SIGNATURE	DATE				Design				